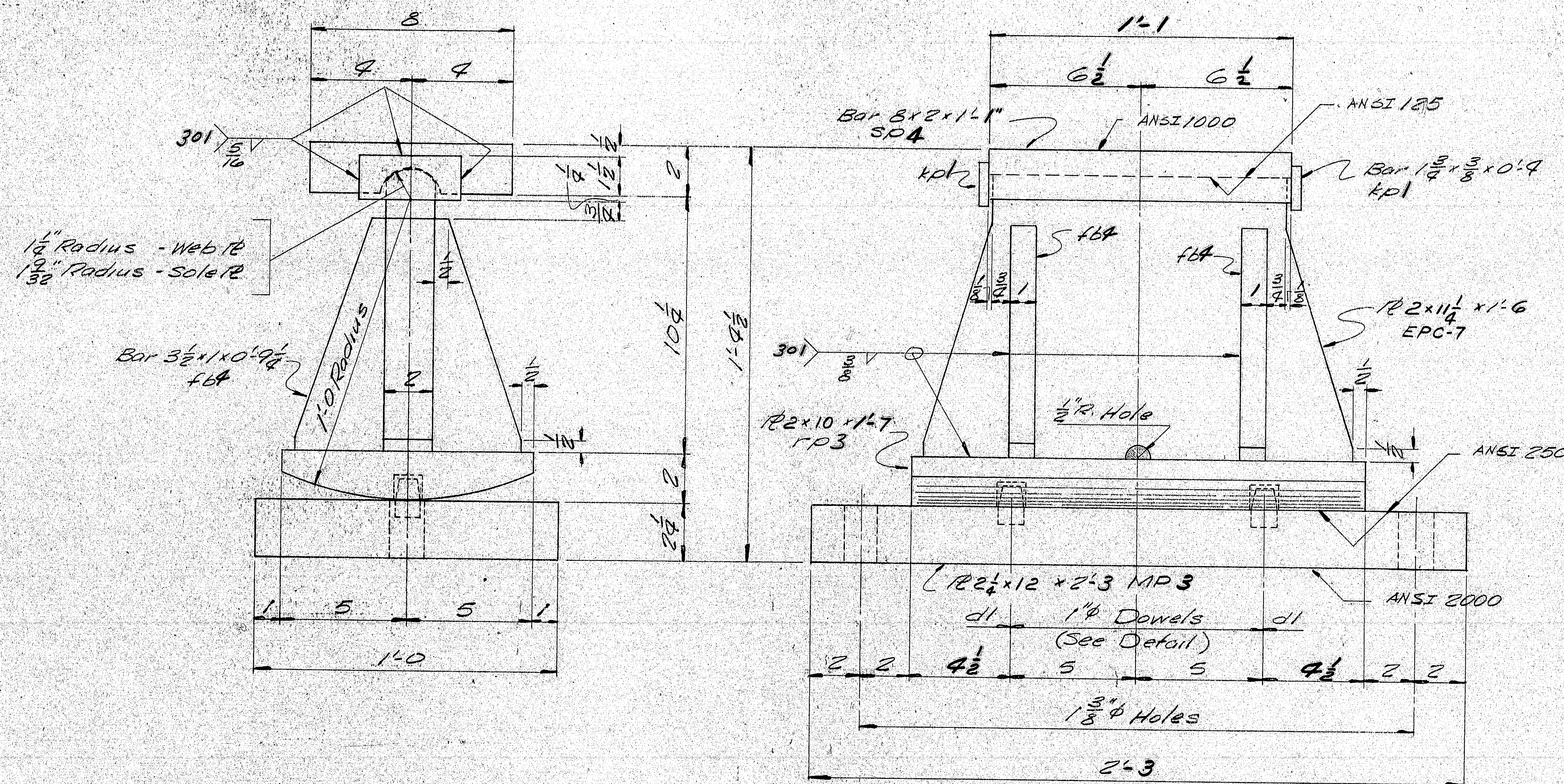




#10 EPC-3

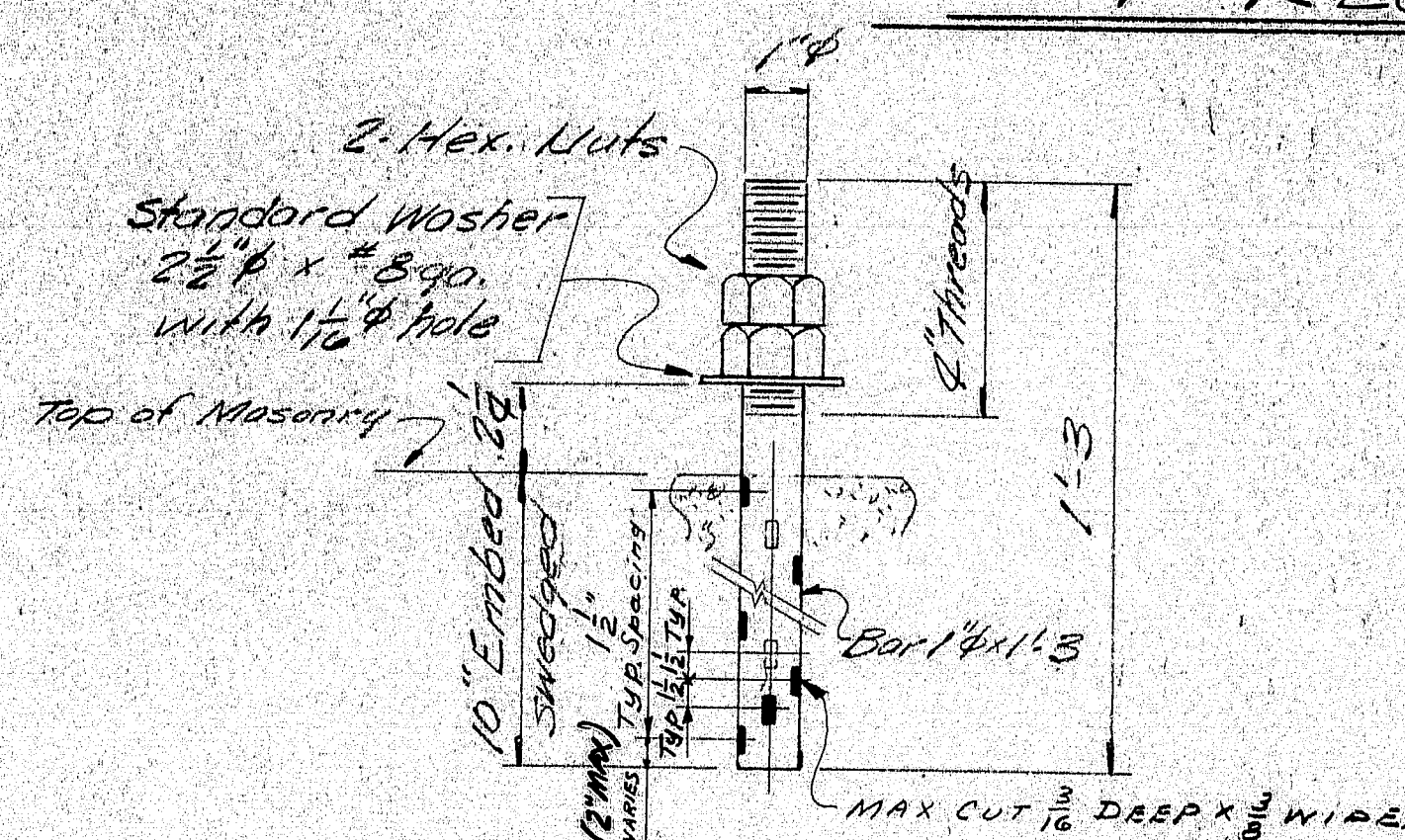
EPC

154-82 MK REV. #19



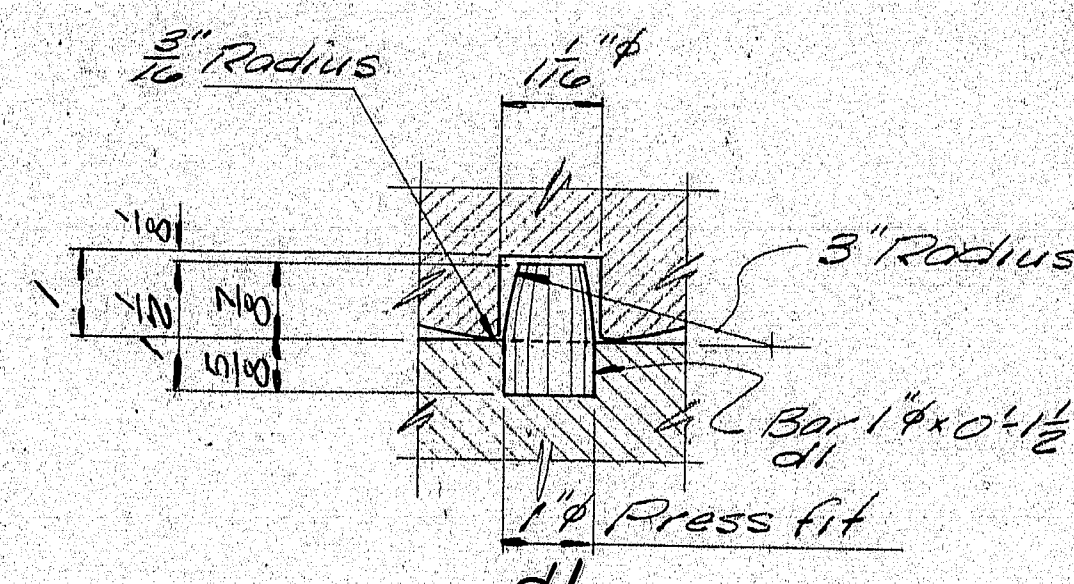
EXPANSION PEDESTAL EPC-7

4 REQ'D.

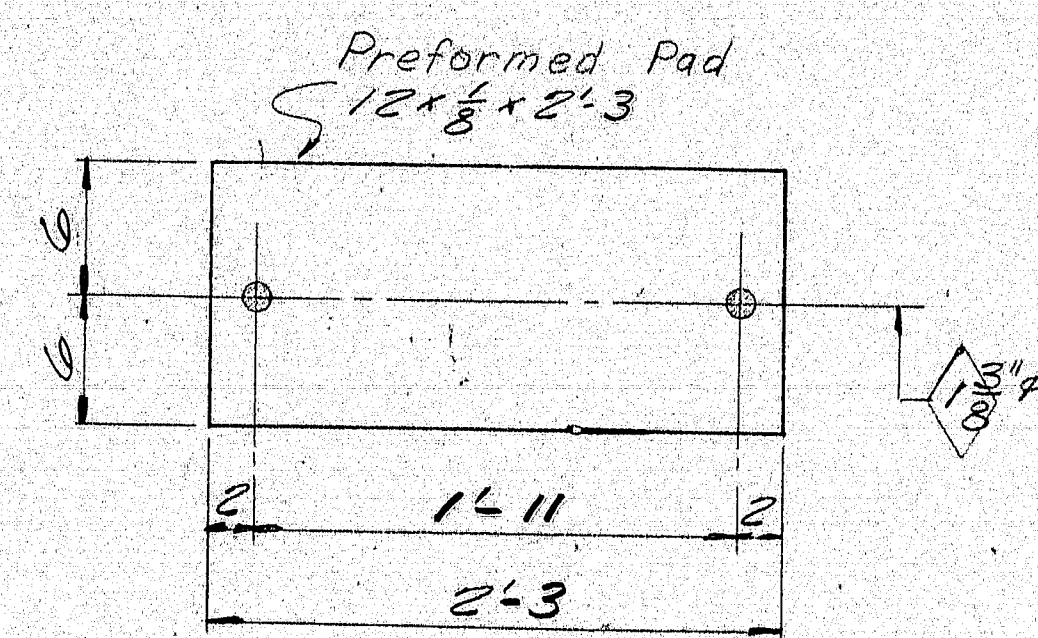


ANCHOR BOLT ABI

8 REQ'D.



DOWEL DETAIL



PREFORMED PAD

FP4 - 4 REQ'D.

PAINT NOTE:

No paint on top of sole plates "sp" and 1" down from top on sides, coat with boiled linseed oil.
No paint on surface with ANSI 125 finish.
Coat with mixture of white lead and tallow.
No paint on Anchor Bolts - Oil Tads.
Masonry R's & bearing surfaces of expansion bearing rockers shall receive 2 coats of shop paint.

SHIP		BILL OF MATERIAL						Job No. 375-19	DWG. NO. 51-4
MARK	NO.	MARK	SHAPE	LENGTH	WT.	ITEM No.	REMARKS		
MP3	4		R 2 1/2 x 12	2 3		75			
	4	103	R 2 x 10	1 7		70			
EPC7	4		R 2 x 1 1/4	1 6		73			
SP4	4		Bar 8 x 2	1 1		64			
	8	401	Bar 1 1/4 x 3/8	0 4		81			
	16	404	Bar 3/4 x 1	0 9 1/2		79			
	8	dl	Bar 1 1/4	0 1 1/2		82			
ABI	8		Bar 1 1/4	1 3		83	SWEDGE		
	16	shop	1 1/4 inch Washer			84	A307		
Field	8		1 1/4 inch Washer			85	STD. WASHER 2 1/2 inch O.D. x 1 1/2 inch Bga. 1 1/4 inch Hole		
							A307		
FP4	4		Pad 12 x 18	2 3		89	PREFORMED PAD		
							REQ. NO. 5828		

ITEM 504-7001
PROJECT NO. I 95-5 (38)

Sole plates "sp" to be field welded to girders.

Bearing material to be ASTM A36, Anchor bolts to be A36.

See SHOP CONNECTIONS: Welding Procedures
FIELD CONNECTIONS:
HOLES: As noted
PAINT: LEAD SILICO-CHOMATE (ORANGE)

APPROVED: 6-6-75

2P 5-5-75 APP
2P 5-28-75 APP
4P 6-10-75 SH-2
2S 6-10-75 STATE
2P 6-24-75 FIELD

PIER #2
BEARING PEDESTAL DETAIL
Bancroft & Martin Inc.
South Portland 7, Maine

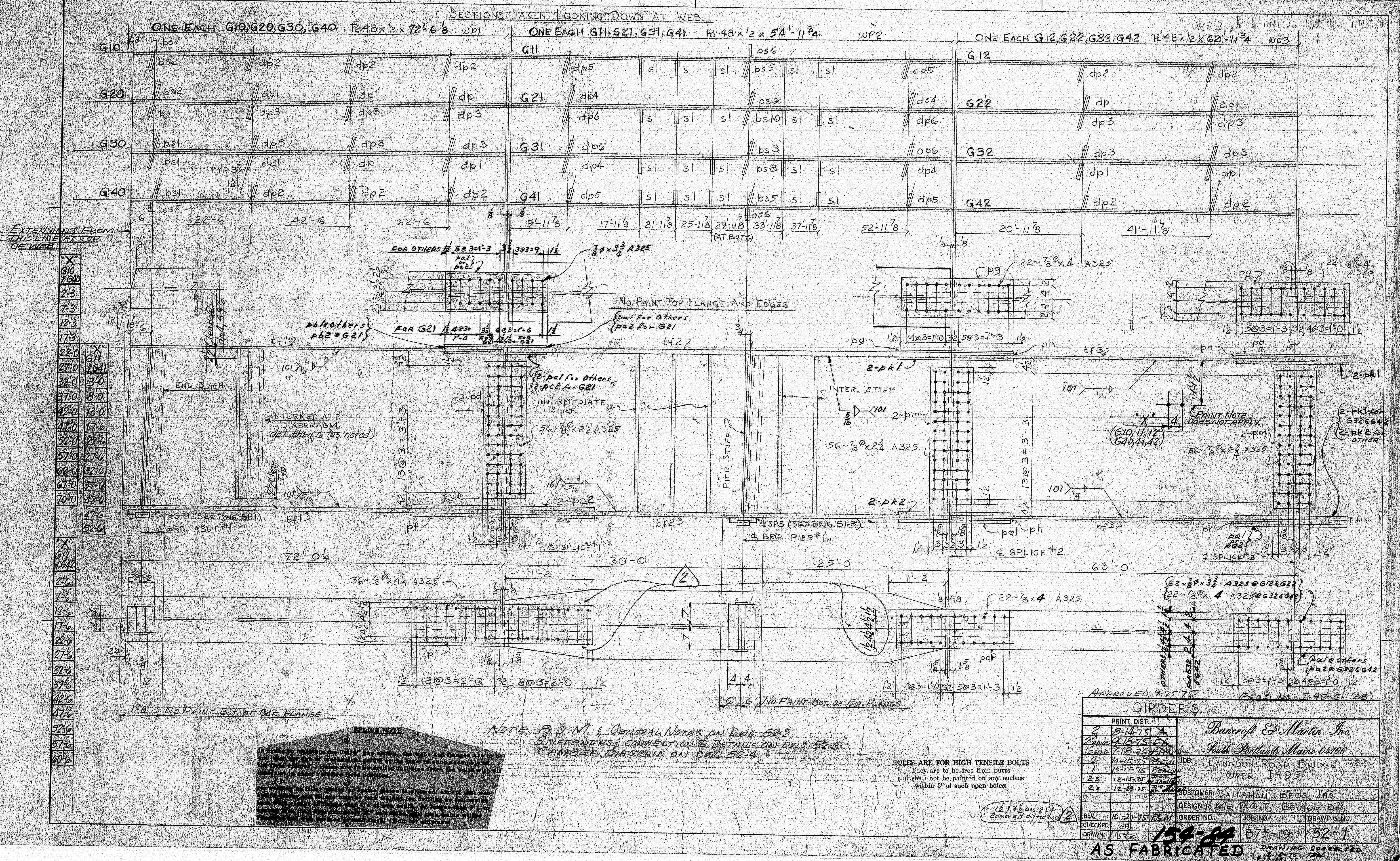
LANGDON ROAD BRIDGE
OVER I-95
RICHMOND, MAINE

CUSTOMER CALLAHAN BROS. INC.
DESIGNER MAINE D.O.T. BUREAU OF HWYS

ORDER NO. 375-19 DWG. NO. 51-4

154-83 REV #14

mod EPC-7

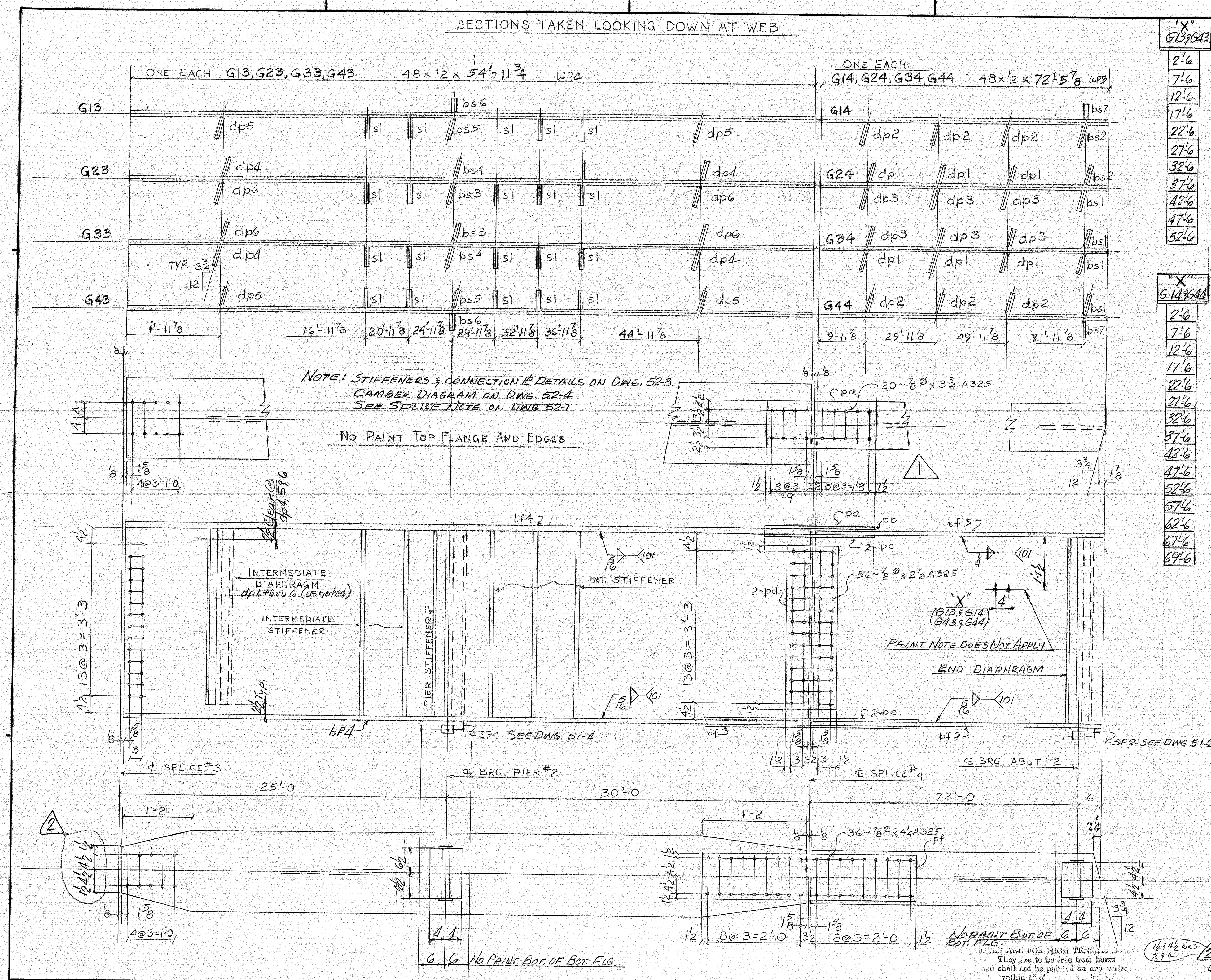


[illegible]

154-85 AS FABRICATED

[illegible]

154-86 AS FABRICATED DRAWING CORRECTED
1-12-15-75 THH



613, 614

2'-6
7'-6
12'-6
17'-6
22'-6
27'-6
32'-6
37'-6
42'-6
47'-6
52'-6

613, 614

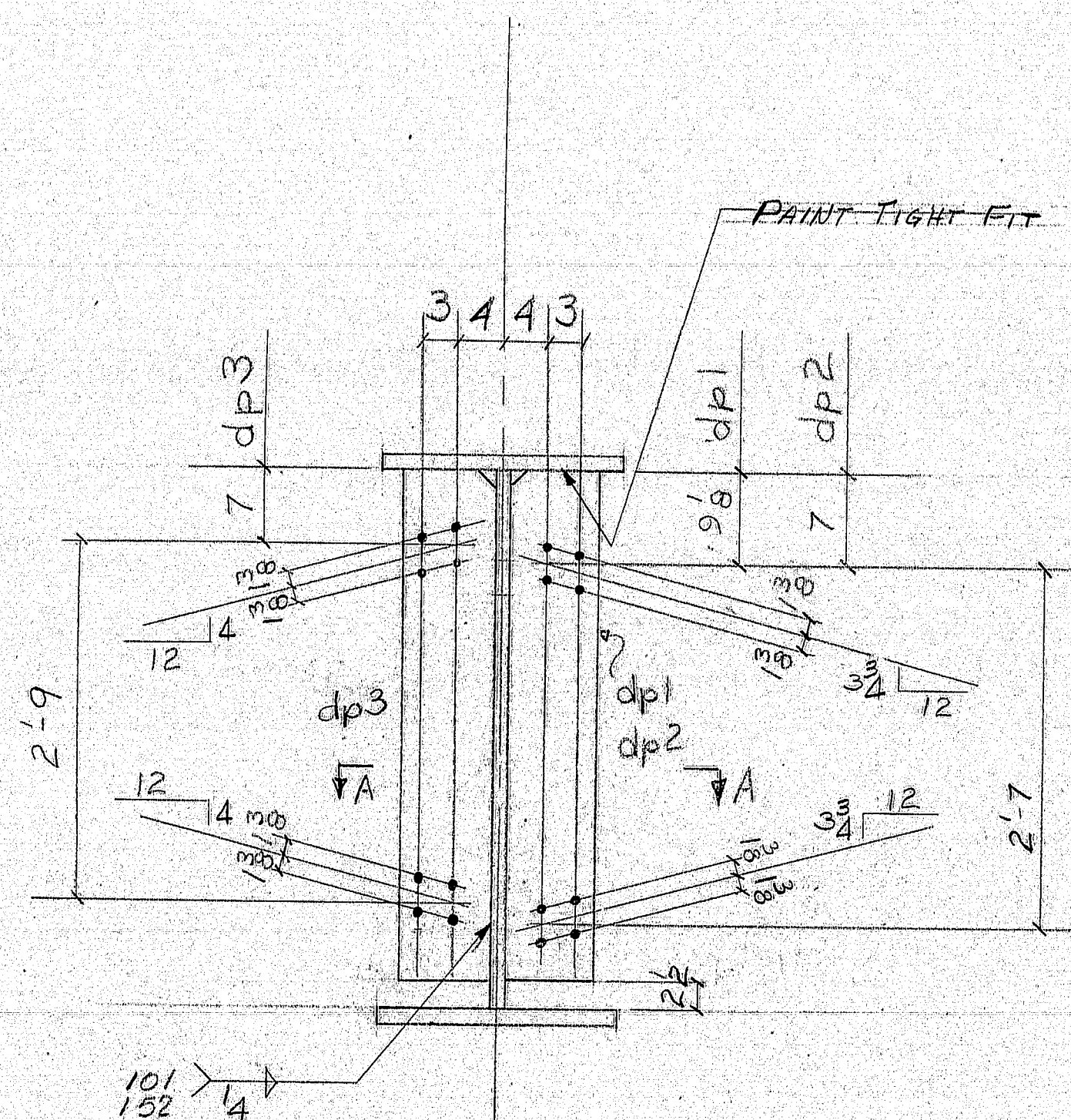
2'-6
7'-6
12'-6
17'-6
22'-6
27'-6
32'-6
37'-6
42'-6
47'-6
52'-6
57'-6
62'-6
67'-6
69'-6

SHIP		BILL OF MATERIAL		JOB NO. B75-19		DWG. NO. 52-2	
MARK	NO.	MARK	SHAPE	LENGTH	WT.	ITEM NO.	REMARKS
G10	G20	G30	G40	72	68	—	ONE EACH
G11	G21	G31	G41	54	11 3/4	—	DO
G12	G22	G32	G42	62	11 3/4	—	DO
G13	G23	G33	G43	54	11 3/4	—	DO
G14	G24	G34	G44	72	5 7/8	—	ONE EACH
10	dp5	R 8 1/2 x 3	3	7	19	—	8-dp4 8-dp5
4	wp1	R 48 x 2	72	68	1	—	SEE CAMBER
4	wp2	Do	54	11 3/4	2	—	DWG. 52-4
4	wp3	Do	62	11 3/4	3	—	—
4	wp4	Do	54	11 3/4	2	—	—
4	wp5	Do	72	5 7/8	1	—	—
8	dp6	R 8 1/2 x 3	3	7	19	—	—
4	tf1	R 12 x 3/4	72	5	4	—	A 572 CVN
4	tf2	R 21 x 1/4	54	11 3/4	8	—	DO
4	tf3	R 12 x 3/4	62	11 3/4	6	—	—
4	tf4	R 21 x 1/4	54	11 3/4	8	—	A 572 CVN
4	tf5	R 12 x 3/4	72	5 7/8	4	—	DO
4	st1	R 6 x 3/8	4	0	20	—	SEE 52-3
4	bf1	R 14 x 1/4	72	68	7	—	A 572 CVN
4	bf2	R 21 x 1/4	54	11 3/4	8	—	—
4	bf3	R 12 x 3/4	62	11 3/4	5	—	—
4	bf4	R 21 x 1/4	54	11 3/4	8	—	—
4	bf5	R 14 x 1/4	72	5 7/8	7	—	—
8	pa	R 12 x 1/2	2	62	12	—	A 572 CVN
8	pb	R Do	1	68	13	—	—
16	pc	R 4 x 5/8	2	62	16	—	A 572 CVN
16	pd	R 12 1/2 x 5/16	3	6	9	—	—
16	pe	R 5 x 15/16	4	6 1/2	18	—	—
8	pf	R 12 x 1 1/16	4	62	15	—	—
8	pg	R 12 x 1/2	2	92	11	—	A 572 CVN
16	ph	R Do	1	68	13	—	—
32	pk	R 4 x 3/4	2	92	17	—	A 572 CVN
16	pm	R 12 1/2 x 3/8	3	6	10	—	—
8	pq	R 12 x 1/16	2	92	14	—	—
16	dp1	R 8 1/2 x 3/8	3	92	19	—	SEE 52-3
16	dp2	Do	3	92	19	—	—
16	dp3	Do	3	92	19	—	—
8	bs1	R 8 1/2 x 3/4	4	0	21	—	—
4	bs2	Do	4	0	21	—	—
3	bs3	R 9 x 1	4	0	22	—	—
2	bs4	Do	4	0	22	—	—
4	bs5	Do	4	0	22	—	—
4	bs6	Do	4	0	22	—	—
4	bs7	R 7 x 3/4	4	0	21	—	—
1	bs8	R 9 x 1	4	0	22	—	—
1	bs9	Do	4	0	22	—	—
1	bs10	Do	4	0	22	—	—

STEEL: ASTM A36 U.N.
WELDING ELECTRODE: SEE WELDING PROCEDURES ITEM # 504.7001
SHOP CONN: WELDED
FIELD CONN: WELDED & BOLTED
HOLES: 1 1/16
PAINT: BASIC LEAD SILICO CHROMATE (ORANGE) PER M.E. SPEC'S. EXCEPT AS NOTED.
SPECIAL CLEANING: BLAST CLEAN
APPROVED: 9-25-75 (30) PROJ. NO. T-95-5 (30)

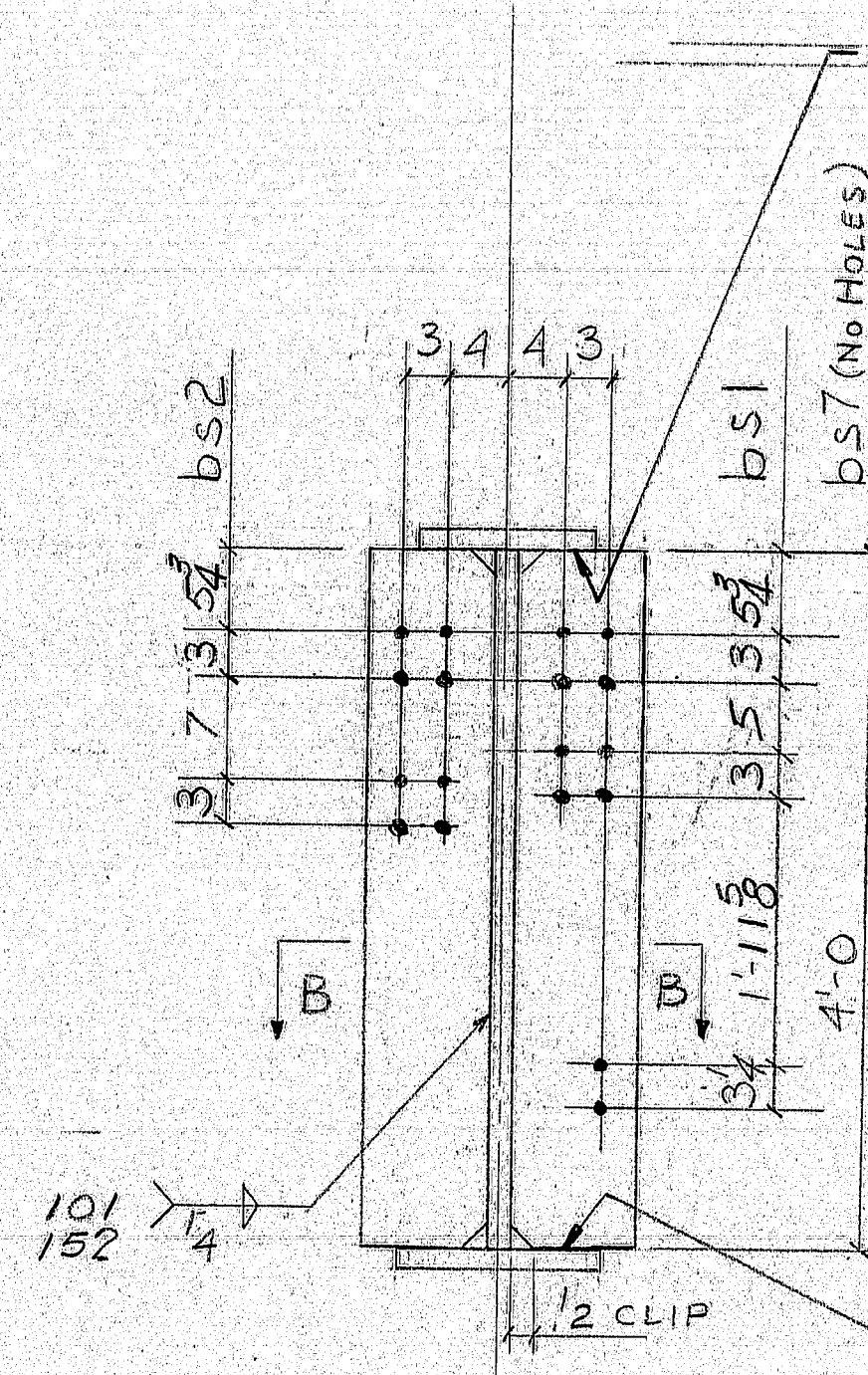
GIRDERS

PRINT DIST.
2 8-14-75
1 8-18-75
1 9-18-75
1 9-22-75
1 10-15-75
1 10-21-75
1 10-27-75
1 11-3-75
1 11-10-75
1 11-17-75
1 11-24-75
1 12-1-75
1 12-8-75
1 12-15-75
1 12-22-75
1 12-29-75
1 1-5-76
1 1-12-76
1 1-19-76
1 1-26-76
1 2-2-76
1 2-9-76
1 2-16-76
1 2-23-76
1 2-30-76
1 3-6-76
1 3-13-76
1 3-20-76
1 3-27-76
1 4-3-76
1 4-10-76
1 4-17-76
1 4-24-76
1 5-1-76
1 5-8-76
1 5-15-76
1 5-22-76
1 5-29-76
1 6-5-76
1 6-12-76
1 6-19-76
1 6-26-76
1 7-3-76
1 7-10-76
1 7-17-76
1 7-24-76
1 7-31-76
1 8-7-76
1 8-14-76
1 8-21-76
1 8-28-76
1 9-4-76
1 9-11-76
1 9-18-76
1 9-25-76
1 10-2-76
1 10-9-76
1 10-16-76
1 10-23-76
1 10-30-76
1 11-6-76
1 11-13-76
1 11-20-76
1 11-27-76
1 12-4-76
1 12-11-76
1 12-18-76
1 12-25-76
1 1-1-77
1 1-8-77
1 1-15-77
1 1-22-77
1 1-29-77
1 2-5-77
1 2-12-77
1 2-19-77
1 2-26-77
1 3-5-77
1 3-12-77
1 3-19-77
1 3-26-77
1 4-2-77
1 4-9-77
1 4-16-77
1 4-23-77
1 4-30-77
1 5-7-77
1 5-14-77
1 5-21-77
1 5-28-77
1 6-4-77
1 6-11-77
1 6-18-77
1 6-25-77
1 7-2-77
1 7-9-77
1 7-16-77
1 7-23-77
1 7-30-77
1 8-6-77
1 8-13-77
1 8-20-77
1 8-27-77
1 9-3-77
1 9-10-77
1 9-17-77
1 9-24-77
1 9-30-77
1 10-7-77
1 10-14-77
1 10-21-77
1 10-28-77
1 11-4-77
1 11-11-77
1 11-18-77
1 11-25-77
1 12-2-77
1 12-9-77
1 12-16-77
1 12-23-77
1 12-30-77
1 1-6-78
1 1-13-78
1 1-20-78
1 1-27-78
1 2-3-78
1 2-10-78
1 2-17-78
1 2-24-78
1 3-2-78
1 3-9-78
1 3-16-78
1 3-23-78
1 3-30-78
1 4-6-78
1 4-13-78
1 4-20-78
1 4-27-78
1 5-4-78
1 5-11-78
1 5-18-78
1 5-25-78
1 6-1-78
1 6-8-78
1 6-15-78
1 6-22-78
1 6-29-78
1 7-6-78
1 7-13-78
1 7-20-78
1 7-27-78
1 8-3-78
1 8-10-78
1 8-17-78
1 8-24-78
1 8-31-78
1 9-7-78
1 9-14-78
1 9-21-78
1 9-28-78
1 10-5-78
1 10-12-78
1 10-19-78
1 10-26-78
1 11-2-78
1 11-9-78
1 11-16-78
1 11-23-78
1 11-30-78
1 12-7-78
1 12-14-78
1 12-21-78
1 12-28-78
1 1-4-79
1 1-11-79
1 1-18-79
1 1-25-79
1 2-1-79
1 2-8-79
1 2-15-79
1 2-22-79
1 2-29-79
1 3-6-79
1 3-13-79
1 3-20-79
1 3-27-79
1 4-3-79
1 4-10-79
1 4-17-79
1 4-24-79
1 5-1-79
1 5-8-79
1 5-15-79
1 5-22-79
1 5-29-79
1 6-5-79
1 6-12-79
1 6-19-79
1 6-26-79
1 7-3-79
1 7-10-79
1 7-17-79
1 7-24-79
1 7-31-79
1 8-7-79
1 8-14-79
1 8-21-79
1 8-28-79
1 9-4-79
1 9-11-79
1 9-18-79
1 9-25-79
1 10-2-79
1 10-9-79
1 10-16-79
1 10-23-79
1 10-30-79
1 11-6-79
1 11-13-79
1 11-20-79
1 11-27-79
1 12-4-79
1 12-11-79
1 12-18-79
1 12-25-79
1 1-1-80
1 1-8-80
1 1-15-80
1 1-22-80
1 1-29-80
1 2-5-80
1 2-12-80
1 2-19-80
1 2-26-80
1 3-5-80
1 3-12-80
1 3-19-80
1 3-26-80
1 4-2-80
1 4-9-80
1 4-16-80
1 4-23-80
1 4-30-80
1 5-7-80
1 5-14-80
1 5-21-80
1 5-28-80
1 6-4-80
1 6-11-80
1 6-18-80
1 6-25-80
1 7-2-80
1 7-9-80
1 7-16-80
1 7-23-80
1 7-30-80
1 8-6-80
1 8-13-80
1 8-20-80
1 8-27-80
1 9-3-80
1 9-10-80
1 9-17-80
1 9-24-80
1 9-30-80
1 10-7-80
1 10-14-80
1 10-21-80
1 10-28-80
1 11-4-80
1 11-11-80
1 11-18-80
1 11-25-80
1 12-2-80
1 12-9-80
1 12-16-80
1 12-23-80
1 12-30-80
1 1-6-81
1 1-13-81
1 1-20-81
1 1-27-81
1 2-3-81
1 2-10-81
1 2-17-81
1 2-24-81
1 3-2-81
1 3-9-81
1 3-16-81
1 3-23-81
1 3-30-81
1 4-6-81
1 4-13-81
1 4-20-81
1 4-27-81
1 5-4-81
1 5-11-81
1 5-18-81
1 5-25-81
1 6-1-81
1 6-8-81
1 6-15-81
1 6-22-81
1 6-29-81
1 7-6-81
1 7-13-81
1 7-20-81
1 7-27-81
1 8-3-81
1 8-10-81
1 8-17-81
1 8-24-81
1 8-31-81
1 9-7-81
1 9-14-81
1 9-21-81
1 9-28-81
1 10-5-81
1 10-12-81
1 10-19-81
1 10-26-81
1 11-2-81
1 11-9-81
1 11-16-81
1 11-23-81
1 11-30-81
1 12-7-81
1 12-14-81
1 12-21-81
1 12-28-81
1 1-4-82
1 1-11-82
1 1-18-82
1 1-25-82
1 2-1-82
1 2-8-82
1 2-15-82
1 2-22-82
1 2-29-82
1 3-6-82
1 3-13-82
1 3-20-82
1 3-27-82
1 4-3-82
1 4-10-82
1 4-17-82
1 4-24-82
1 5-1-82
1 5-8-82
1 5-15-82
1 5-22-82
1 5-29-82
1 6-5-82
1 6-12-82
1 6-19-82
1 6-26-82
1 7-3-82
1 7-10-82
1 7-17-82
1 7-24-82
1 7-31-82
1 8-7-82
1 8-14-82
1 8-21-82
1 8-28-82
1 9-4-82
1 9-11-82
1 9-18-82
1 9-25-82
1 10-2-82
1 10-9-82
1 10-16-82
1 10-23-82
1 10-30-82
1 11-6-82
1 11-13-82
1 11-20-82
1 11-27-82
1 12-4-82
1 12-11-82
1 12-18-82
1 12-25-82
1 1-1-83
1 1-8-83
1 1-15-83
1 1-22-83
1 1-29-83
1 2-5-83
1 2-12-83
1 2-19-83
1 2-26-83
1 3-5-83
1 3-12-83
1 3-19-83
1 3-26-83
1 4-2-83
1 4-9-83
1 4-16-83
1 4-23-83
1 4-30-83
1 5-7-83
1 5-14-83
1 5-21-83
1 5-28-83
1 6-4-83
1 6-11-83
1 6-18-83
1 6-25-83
1 7-2-83
1 7-9-83
1 7-16-83
1 7-23-83
1 7-30-83
1 8-6-83
1 8-13-83
1 8-20-83
1 8-27-83
1 9-3-83
1 9-10-83
1 9-17-83
1 9-24-83
1 9-30-83
1 10-7-83
1 10-14-83
1 10-21-83
1 10-28-83
1 11-4-83
1 11-11-83
1 11-18-83
1 11-25-83
1 12-2-83
1 12-9-83
1 12-16-83
1 12-23-83
1 12-30-83
1 1-6-84
1 1-13-84
1 1-20-84
1 1-27-84
1 2-3-84
1 2-10-84
1 2-17-84
1 2-24-84
1 3-2-84
1 3-9-84
1 3-16-84
1 3-23-84
1 3-30-84
1 4-6-84
1 4-13-84
1 4-20-84
1 4-27-84
1 5-4-84
1 5-11-84
1 5-18-84
1 5-25-84
1 6-1-84
1 6-8-84
1 6-15-84
1 6-22-84
1 6-29-84
1 7-6-84
1 7-13-84
1 7-20-84
1 7-27-84
1 8-3-84
1 8-10-84
1 8-17-84
1 8-24-84
1 8-31-84
1 9-7-84
1 9-14-84
1 9-21-84
1 9-28-84
1 10-5-84
1 10-12-84
1 10-19-84
1 10-26-84
1 11-2-84
1 11-9-84
1 11-16-84
1 11-23-84
1 11-30-84
1 12-7-84
1 12-14-84
1 12-21-84
1 12-28-84
1 1-4-85
1 1-11-85
1 1-18-85
1 1-25-85
1 2-1-85
1 2-8-85
1 2-15-85
1 2-22-85
1 2-29-85
1 3-6-85
1 3-13-85
1 3-20-85
1 3-27-85
1 4-3-85
1 4-10-85
1 4-17-85
1 4-24-85
1 5-1-85
1 5-8-85
1 5-15-85
1 5-22-85
1 5-29-85
1 6-5-85
1 6-12-85
1 6-19-85
1 6-26-85
1 7-3-85
1 7-10-85
1 7-17-85
1 7-24-85
1 7-31-85
1 8-7-85
1 8-14-85
1 8-21-85
1 8-28-85
1 9-4-85
1 9-11-85
1 9-18-85
1 9-25-85
1 10-2-85
1 10-9-85
1 10-16-85
1 10-23-85
1 10-30-85
1 11-6-85
1 11-13-85
1 11-20-85
1 11-27-85
1 12-4-85
1 12-11-85
1 12-18-85
1 12-25-85
1 1-1-86
1 1-8-86
1 1-15-86
1 1-22-86
1 1-29-86
1 2-5-86
1 2-12-86
1 2-19-86
1 2-26-86
1 3-5-86
1 3-12-86
1 3-19-86
1 3-26-86
1 4-2-86
1 4-9-86
1 4-16-86
1 4-23-86
1 4-30-86
1 5-7-86
1 5-14-86
1 5-21-86
1 5-28-86
1 6-4-86
1 6-11-86
1 6-18-86
1 6-25-86
1 7-2-86
1 7-9-86
1 7-16-86
1 7-23-86
1 7-30-86
1 8-6-86
1 8-13-86
1 8-20-86
1 8-27-86
1 9-3-86
1 9-10-86
1 9-17-86
1 9-24-86
1 9-30-86
1 10-7-86
1 10-14-86
1 10-21-86
1 10-28-86
1 11-4-86
1 11-11-86
1 11-18-86
1 11-25-86
1 12-2-86
1 12-9-86
1 12-16-86
1 12-23-86
1 12-30-86
1 1-6-87
1 1-13-87
1 1-20-87
1 1-27-87
1 2-3-87
1 2-10-87
1 2-17-87
1 2-24-87
1 3-2-87
1 3-9-87
1 3-16-87
1 3-23-87
1 3-30-87
1 4-6-87
1 4-13-87
1 4-20-87
1 4-27-87
1 5-4-87
1 5-11-87
1 5-18-87
1 5-25-87
1 6-1-87
1 6-8-87
1 6-15-87
1 6-22-87
1 6-29-87
1 7-6-87
1 7-13-87
1 7-20-87
1 7-27-87
1 8-3-87
1 8-10-87
1 8-17-87
1 8-24-87
1 8-31-87
1 9-7-87
1 9-14-87
1 9-21-87
1 9-28-87
1 10-5-87
1 10-12-87
1 10-19-87
1 10-26-87
1 11-2-87
1 11-9-87
1 11-16-87
1 11-23-87
1 11-30-87
1 12-7-87
1 12-14-87
1 12-21-87
1 12-28-87
1 1-4-88
1 1-11-88
1 1-18-88
1 1-25-88
1 2-1-88
1 2-8-88
1 2-15-88
1 2-22-88
1 2-29-88
1 3-6-88
1 3-13-88
1 3-20-88
1 3-27-88
1 4-3-88
1 4-10-88
1 4-17-88
1 4-24-88
1 5-1-88
1 5-8-88
1 5-15-88
1 5-22-88
1 5-29-88
1 6-5-88
1 6-12-88
1 6-19-88
1 6-26-88
1 7-3-88
1 7-10-88
1 7-17-88
1 7-24-88
1 7-31-88
1 8-7-88
1 8-14-88
1 8-21-88
1 8-28-88
1 9-4-88
1 9-11-88
1 9-18-88
1 9-25-88
1 10-2-88
1 10-9-88
1 10-16-88
1 10-23-88
1 10-30-88
1 11-6-88
1 11-13-88
1 11-20-88
1 11-27-88
1 12-4-88
1 12-11-88
1 12-18-88
1 12-25-88
1 1-1-89
1 1-8-89
1 1-15-89
1 1-22-89
1 1-29-89
1 2-5-89
1 2-12-89
1 2-19-89
1 2-26-89
1 3-5-89
1 3-12-89
1 3-19-89
1 3-26-89
1 4-2-89
1 4-9-89
1 4-16-89
1 4-23-89
1 4-30-89
1 5-7-89
1 5-14-89
1 5-21-89
1 5-28-89
1 6-4-89
1 6-11-89
1 6-18-89
1 6-25-89
1 7-2-89
1 7-9-89
1 7-16-89
1 7-23-89
1 7-30-89
1 8-6-89
1 8-13-89
1 8-20-89
1 8-27-89
1 9-3-89
1 9-10-89
1 9-17-89
1 9-24-89
1 9-30-89
1 10-7-89
1 10-14-89
1 10-21-89
1 10-28-89
1 11-4-89
1 11-11-89
1 11-18-89
1 11-25-89
1 12-2-89
1 12-9-89
1 12-16-89
1 12-23-89

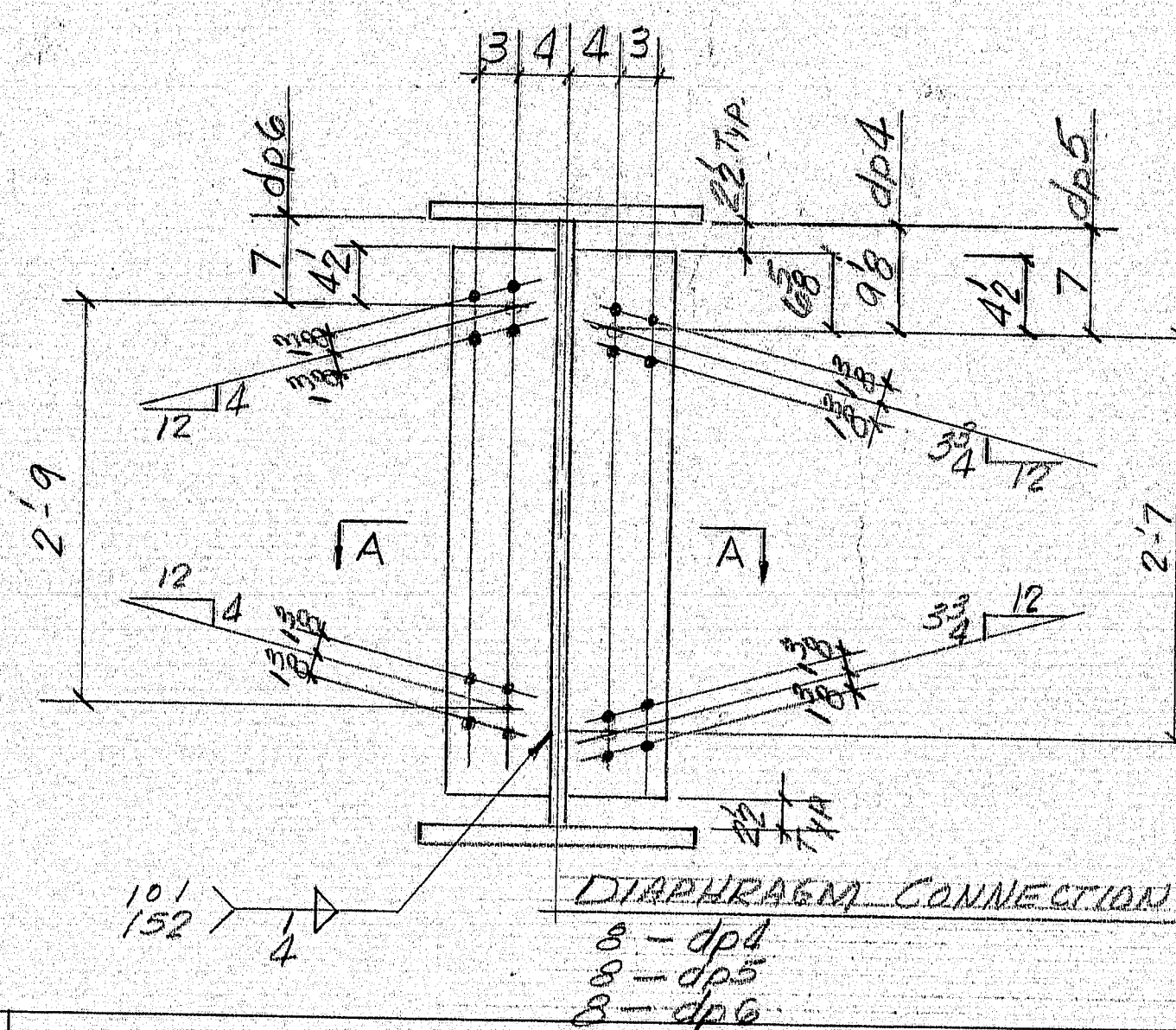


DIAPHRAGM CONNECTION
R 8'2" x 3'8" x 3'-9 1/2"

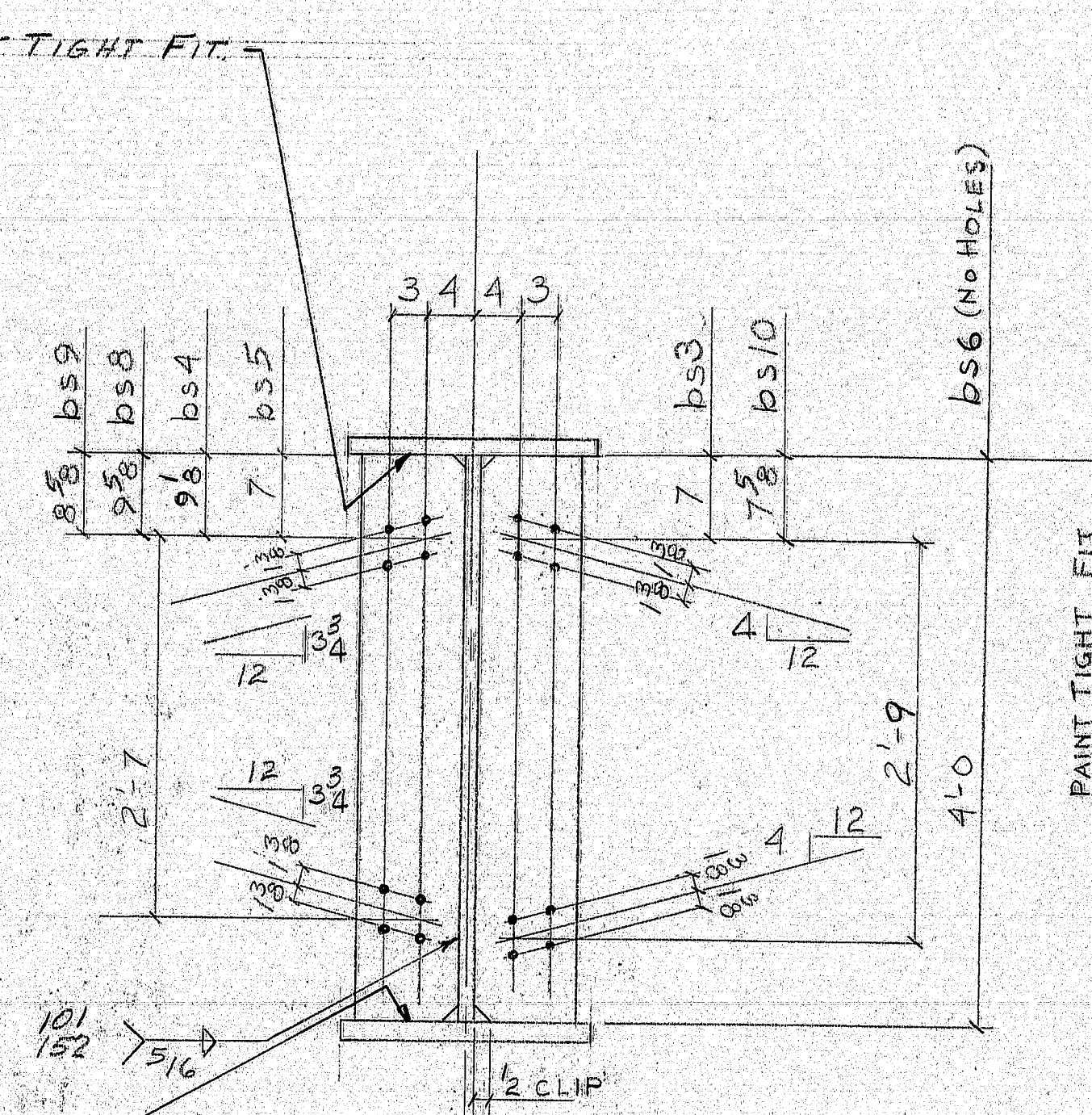
16 ~ dp2
16 ~ dp1
16 ~ dp3



ABUT. BEARING STIFF. DIAPHRAGM R's
R 8'4" x 3' x 4'-0" 8-bs1 ~ 4-bs2
BOR 7' x 3' x 4'-0" 4-bs7

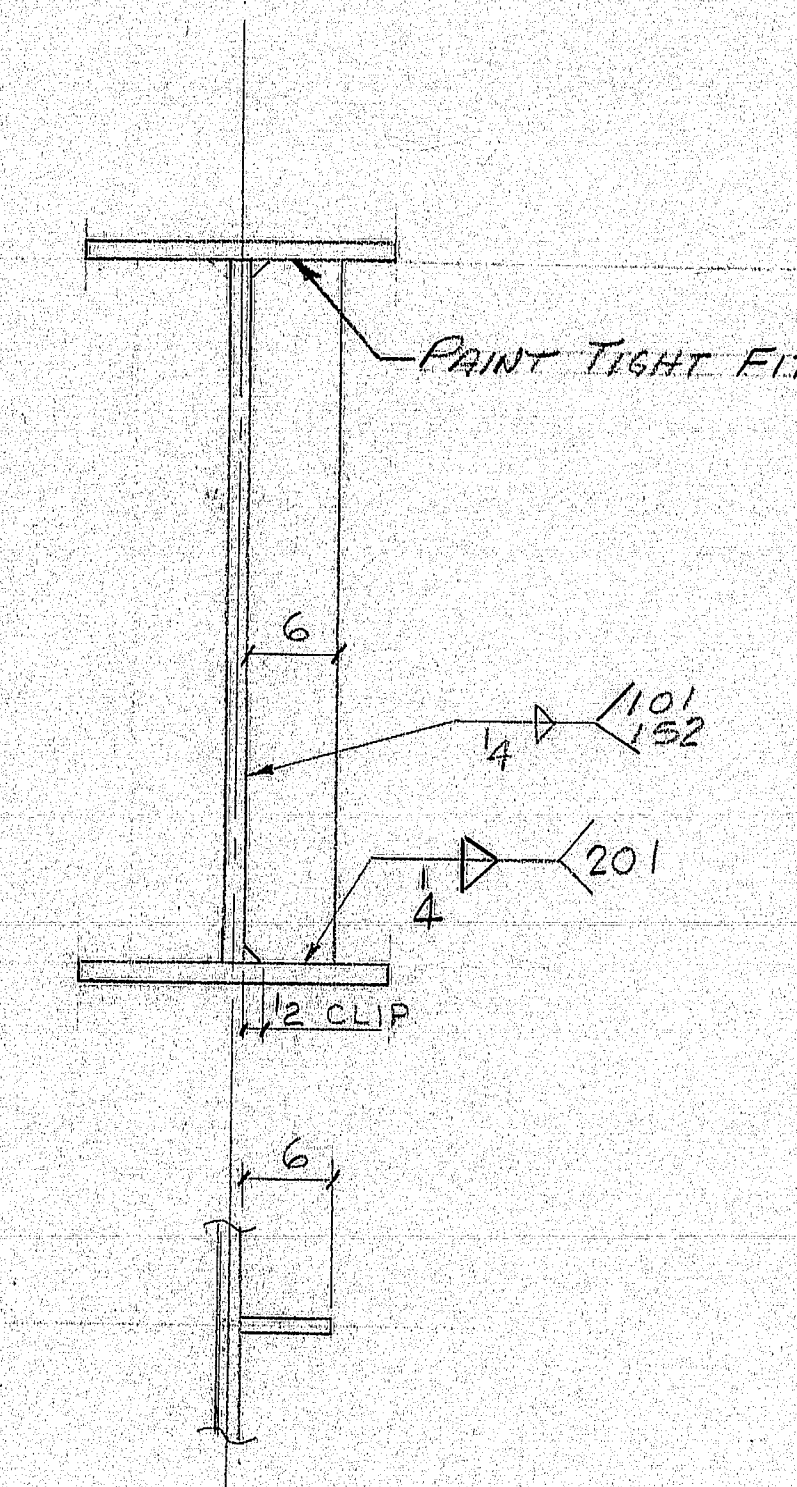


DIAPHRAGM CONNECTION R 8'2" x 3' x 3'-7"
8-dp1
8-dp5
8-dp6



PIER BEARING STIFFENER
R 9'1" x 4'-0"

3 ~ bs3
2 ~ bs4
4 ~ bs5
4 ~ bs6
ONE ~ bs8
ONE ~ bs9
ONE ~ bs10



INTERMEDIATE STIFFENER
R 6' x 3'8" x 4'-0"

40 ~ s1

NOTES

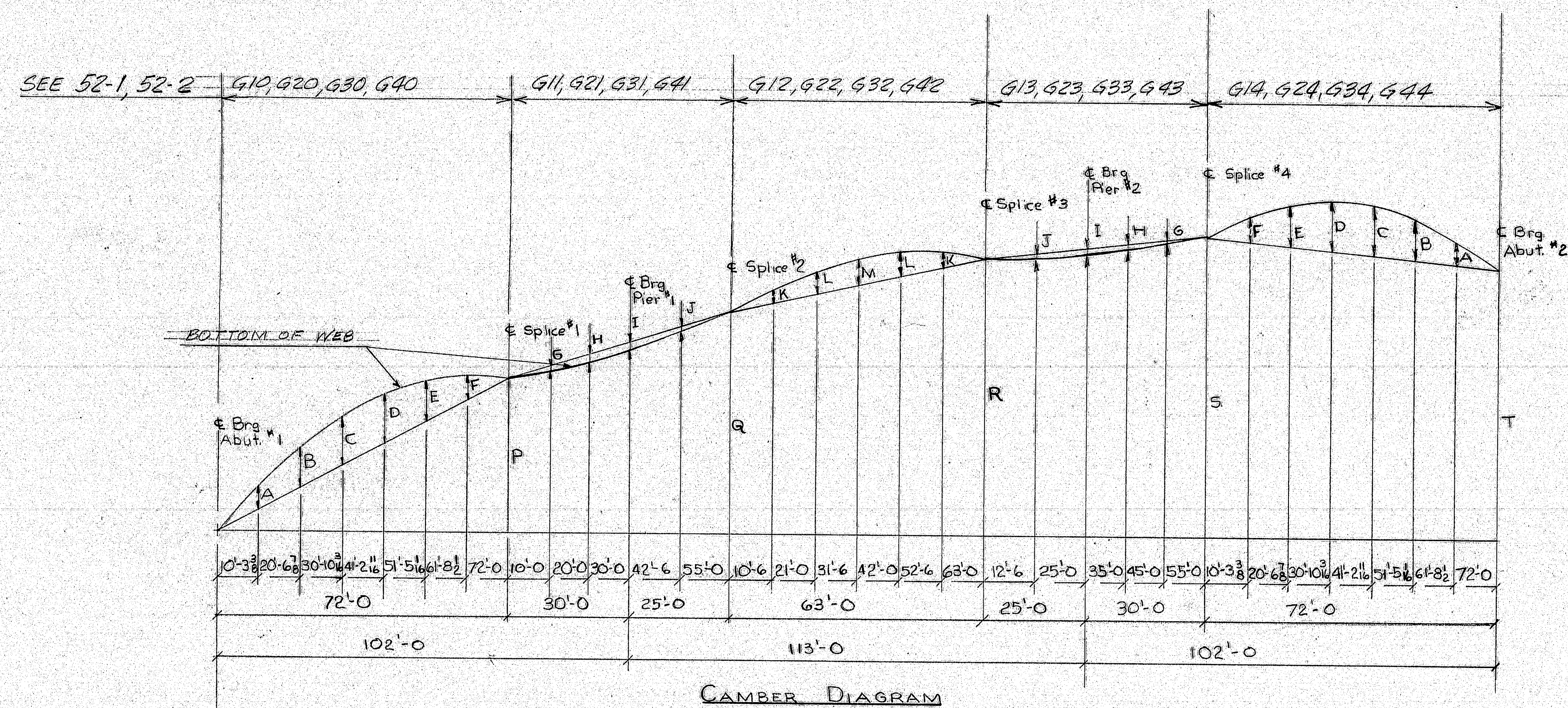
HOLES 1 1/2" Ø
PAINT: SEE B.O.M. 52-2
STEEL A36

HOLES ARE FOR HIGH TENSILE BOLTS
They are to be free from burrs
and shall not be painted on any surface
within 5" of such open holes.

APPROVED 9-25-75 PROJ. No. I-95-5(38)

STIFFENER & CONNECTION PLATE DETAILS			
REV.	CHECKED	DRAWN	DATE
1	CB	BRR	10-15-75
2	CB	BRR	10-15-75
3	CB	BRR	10-15-75
4	CB	BRR	10-15-75
5	CB	BRR	10-15-75
6	CB	BRR	10-15-75
7	CB	BRR	10-15-75
8	CB	BRR	10-15-75
9	CB	BRR	10-15-75
10	CB	BRR	10-15-75
11	CB	BRR	10-15-75
12	CB	BRR	10-15-75
13	CB	BRR	10-15-75
14	CB	BRR	10-15-75
15	CB	BRR	10-15-75
16	CB	BRR	10-15-75
17	CB	BRR	10-15-75
18	CB	BRR	10-15-75
19	CB	BRR	10-15-75
20	CB	BRR	10-15-75
21	CB	BRR	10-15-75
22	CB	BRR	10-15-75
23	CB	BRR	10-15-75
24	CB	BRR	10-15-75
25	CB	BRR	10-15-75
26	CB	BRR	10-15-75
27	CB	BRR	10-15-75
28	CB	BRR	10-15-75
29	CB	BRR	10-15-75
30	CB	BRR	10-15-75
31	CB	BRR	10-15-75
32	CB	BRR	10-15-75
33	CB	BRR	10-15-75
34	CB	BRR	10-15-75
35	CB	BRR	10-15-75
36	CB	BRR	10-15-75
37	CB	BRR	10-15-75
38	CB	BRR	10-15-75
39	CB	BRR	10-15-75
40	CB	BRR	10-15-75
41	CB	BRR	10-15-75
42	CB	BRR	10-15-75
43	CB	BRR	10-15-75
44	CB	BRR	10-15-75
45	CB	BRR	10-15-75
46	CB	BRR	10-15-75
47	CB	BRR	10-15-75
48	CB	BRR	10-15-75
49	CB	BRR	10-15-75
50	CB	BRR	10-15-75
51	CB	BRR	10-15-75
52	CB	BRR	10-15-75
53	CB	BRR	10-15-75
54	CB	BRR	10-15-75
55	CB	BRR	10-15-75
56	CB	BRR	10-15-75
57	CB	BRR	10-15-75
58	CB	BRR	10-15-75
59	CB	BRR	10-15-75
60	CB	BRR	10-15-75
61	CB	BRR	10-15-75
62	CB	BRR	10-15-75
63	CB	BRR	10-15-75
64	CB	BRR	10-15-75
65	CB	BRR	10-15-75
66	CB	BRR	10-15-75
67	CB	BRR	10-15-75
68	CB	BRR	10-15-75
69	CB	BRR	10-15-75
70	CB	BRR	10-15-75
71	CB	BRR	10-15-75
72	CB	BRR	10-15-75
73	CB	BRR	10-15-75
74	CB	BRR	10-15-75
75	CB	BRR	10-15-75
76	CB	BRR	10-15-75
77	CB	BRR	10-15-75
78	CB	BRR	10-15-75
79	CB	BRR	10-15-75
80	CB	BRR	10-15-75
81	CB	BRR	10-15-75
82	CB	BRR	10-15-75
83	CB	BRR	10-15-75
84	CB	BRR	10-15-75
85	CB	BRR	10-15-75
86	CB	BRR	10-15-75
87	CB	BRR	10-15-75
88	CB	BRR	10-15-75
89	CB	BRR	10-15-75
90	CB	BRR	10-15-75
91	CB	BRR	10-15-75
92	CB	BRR	10-15-75
93	CB	BRR	10-15-75
94	CB	BRR	10-15-75
95	CB	BRR	10-15-75
96	CB	BRR	10-15-75
97	CB	BRR	10-15-75
98	CB	BRR	10-15-75
99	CB	BRR	10-15-75
100	CB	BRR	10-15-75

154-89

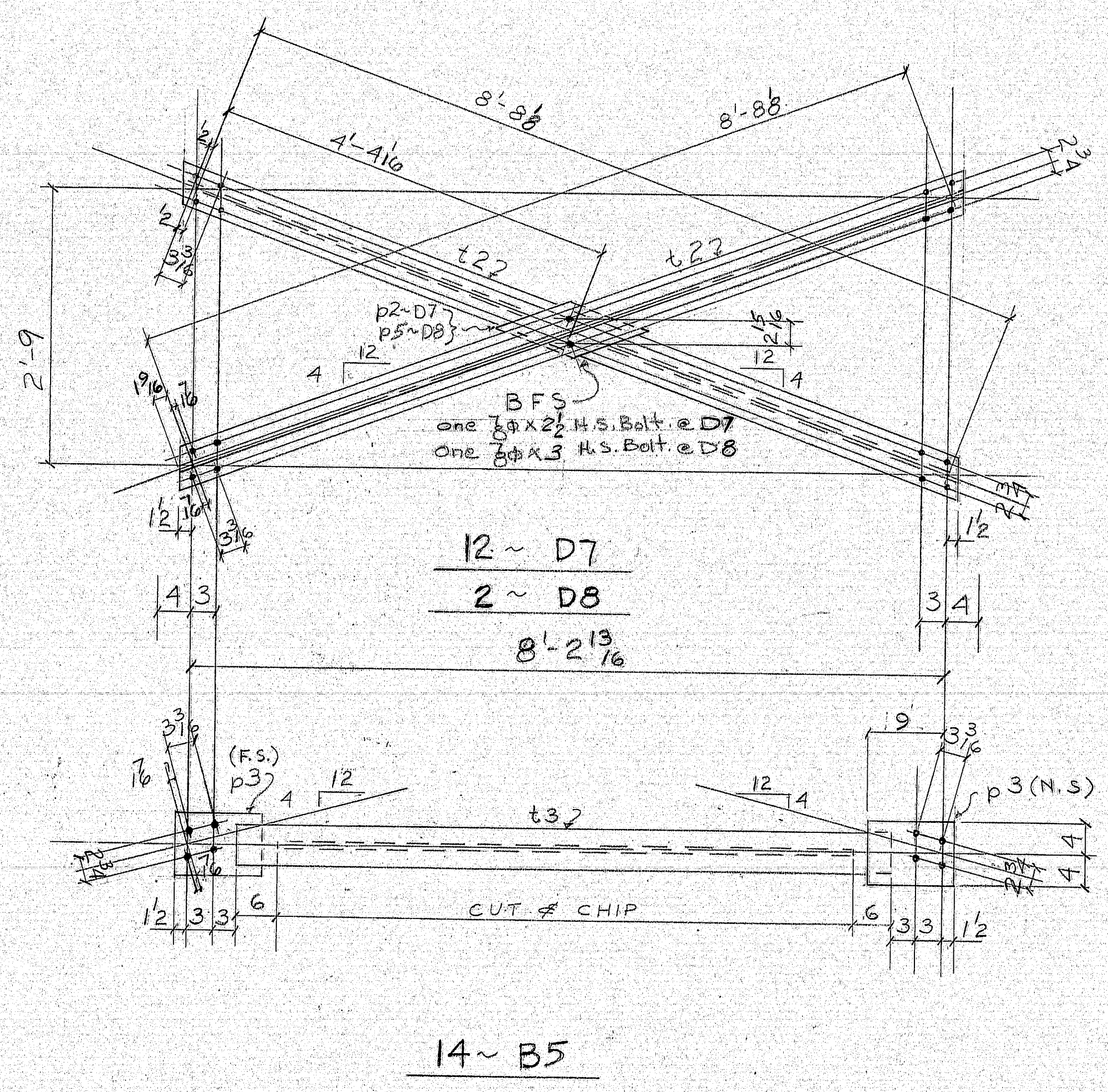


ORDINATES FROM LEVEL LINE					
Beam	P	Q	R	S	T
G1	1'-10 3/4	2'-8 1/8	3'-4 3/8	3'-8 3/8	3'-3 1/4
G2	1'-11 1/4	2'-9 3/8	3'-5 3/8	3'-9 3/8	3'-4 1/8
G3	1'-11 1/2	2'-9 1/8	3'-6 1/8	3'-10	3'-5 3/8
G4	1'-11 1/8	2'-10 3/8	3'-6 7/8	3'-10 7/8	3'-6 1/8

CAMBER ORDINATES												
Beam	A	B	C	D	E	F	G	H	I	J	K	L
G1 & G4	1 1/16	1 7/8	2 3/8	2 3/8	1 15/16	1 1/8	0	3 1/16	4	3 1/16	1 1/8	1 1/4
G2 & G3	1 1/16	2 0	2 3/8	2 3/8	2 3/8	1 1/4	1 1/16	3 1/16	4	3 1/16	1 1/8	1 1/4

APPROVED 9-25-75 PROJ. No. I-95-5(28)

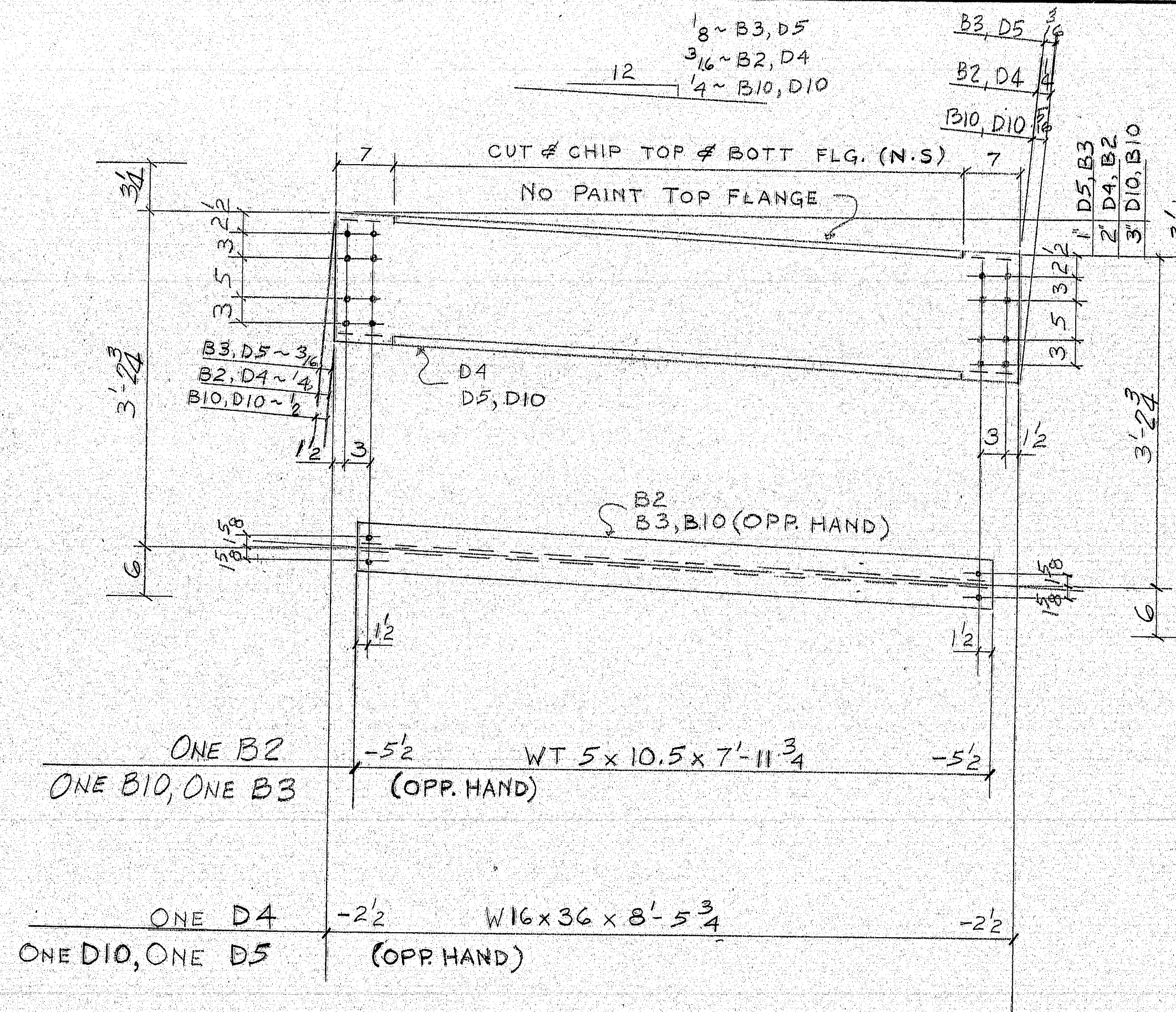
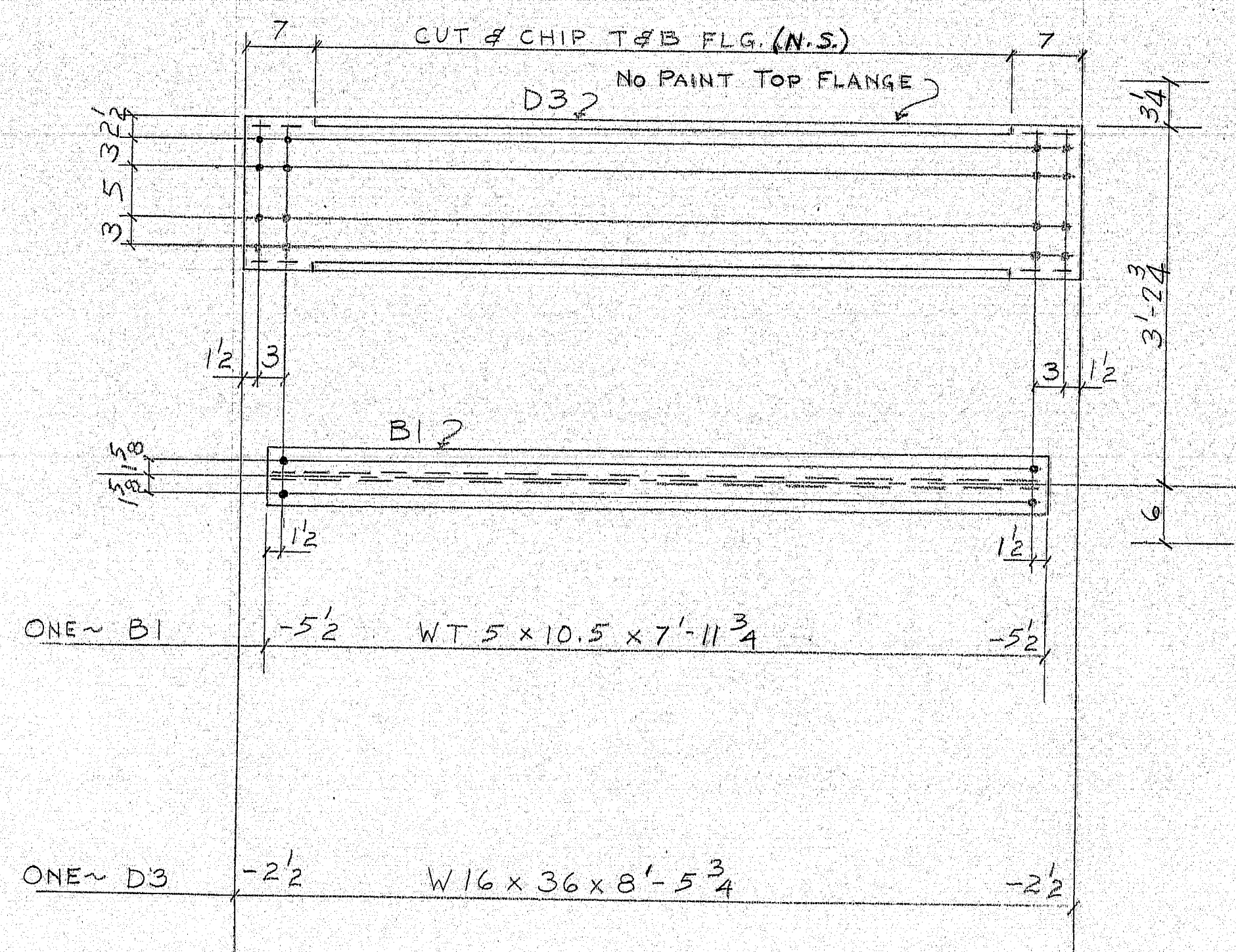
CAMBER DIAGRAM			
PRINT DIST.	Bancroft & Martin Inc.		
2 8-14-75	South Portland, Maine 04106		
2 Splice 9-18-75	JOB: LANGDON ROAD BRIDGE OVER INTERSTATE 95		
1 Splice 9-18-75	CUSTOMER: CALLAHAN BROS. INC.		
2 10-15-75	DESIGNER: ME.D.O.T. BRIDGE DIV.		
1 10-15-75	ORDER NO. 875-19		
	JOB NO. 52-4		DRAWING NO. 154-90
REV.	CHECKED	DRAWN	
	CTB	WE	

[illegible]

HOLES ARE FOR HIGH TENSILE BOLTS
They are to be free from burrs
and shall not be painted on any surface
within 5" of such open holes.

Bolt List & Welding procedure

154-91

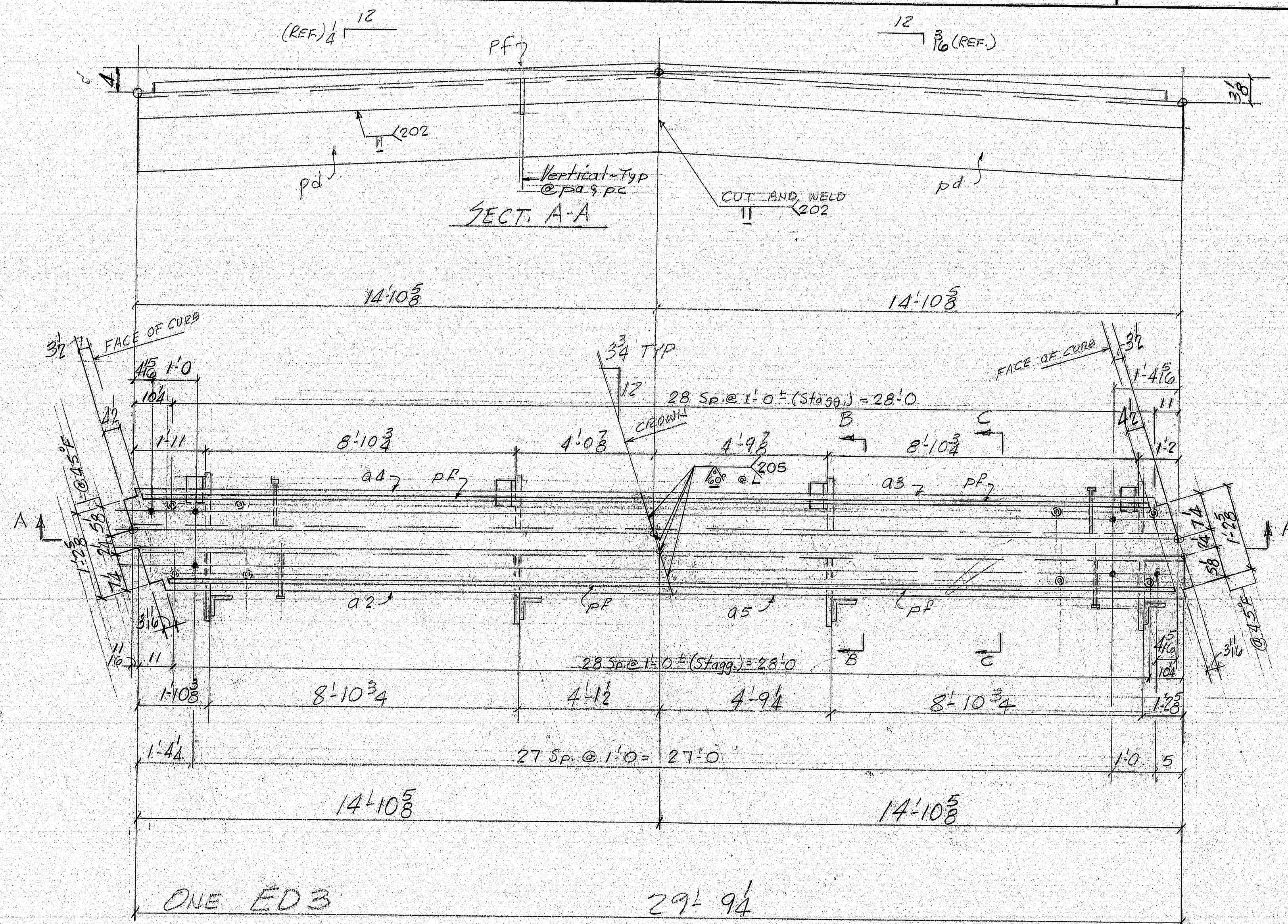


Typ @ CUT & CHIF

HOLES ARE FOR HIGH TENSILE BOLTS
They are to be free from burrs
and shall not be painted on any surface
within 5" of such open holes.

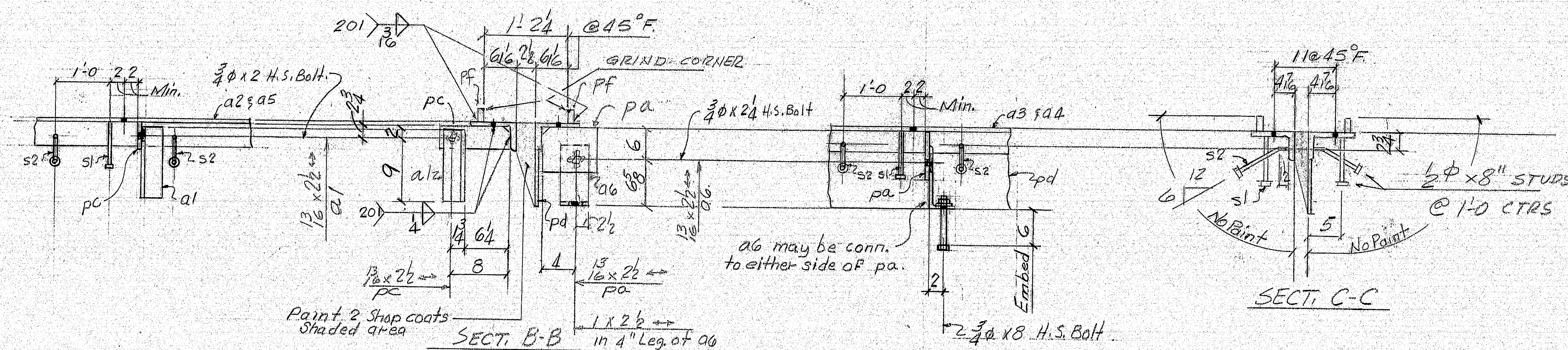
[illegible]

154-92

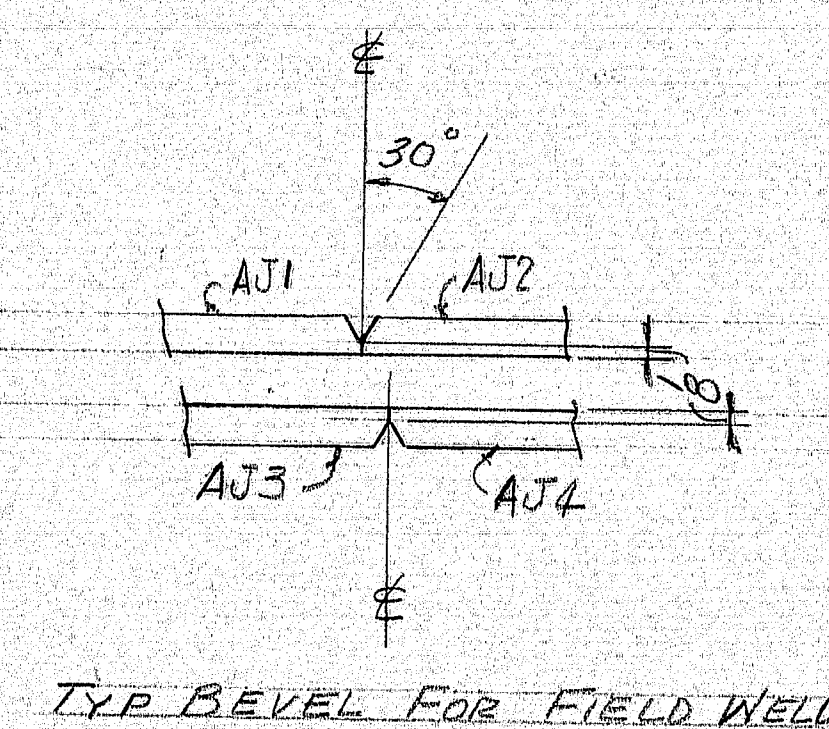
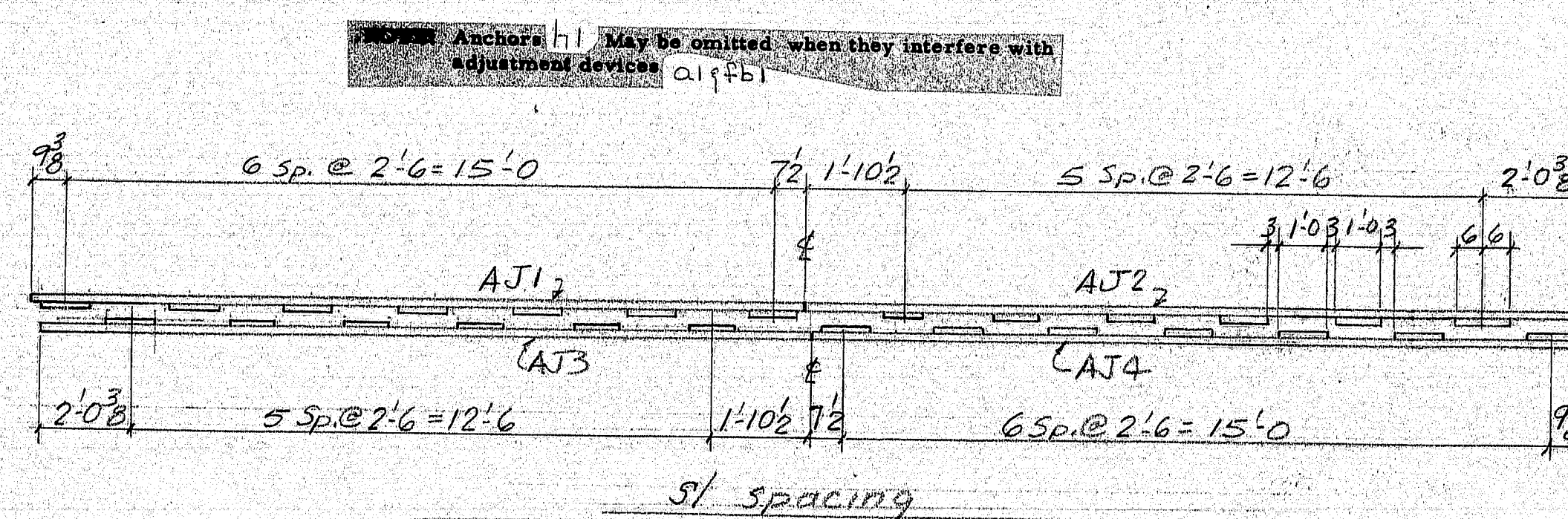
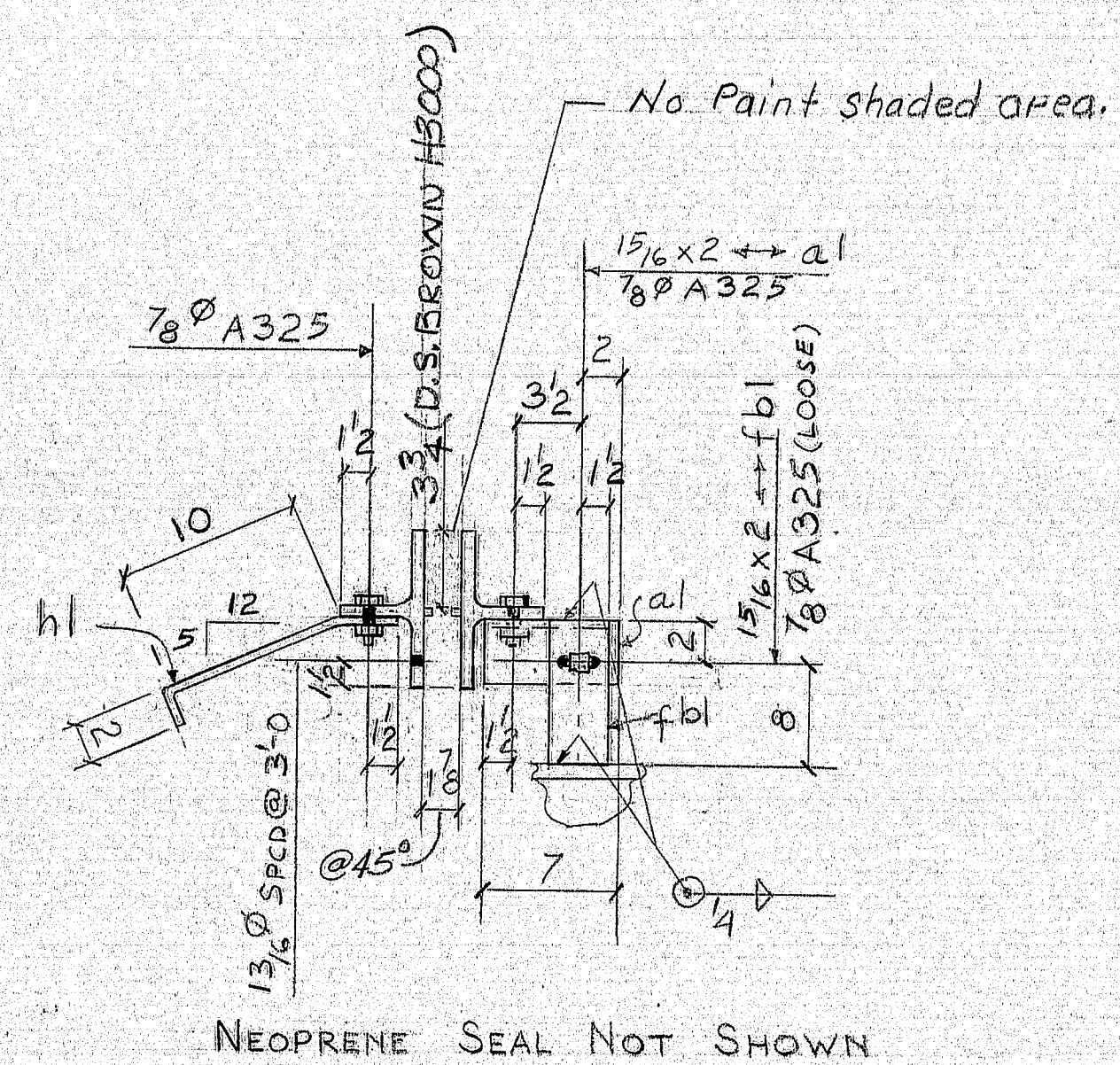


Note: Shop to adjust spacing of studs s1/s2 & bars pa & pc to clear 1/2" holes as shown & noted.

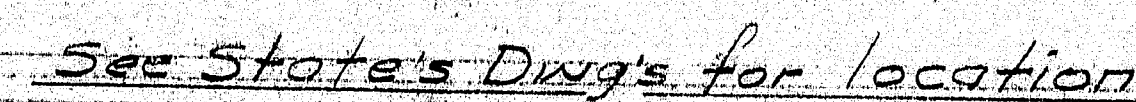
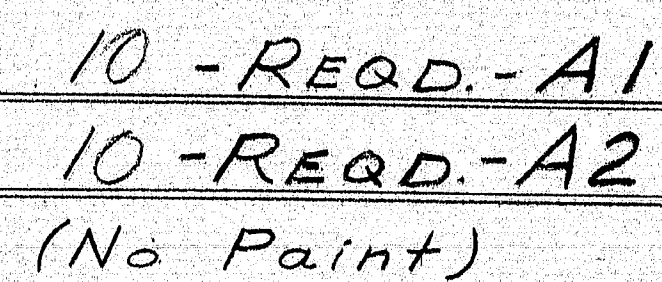
NOTE:
TRANSFLEX SEAL
AND INSERTS NOT BY B&M.



SHIP		BILL OF MATERIAL			JOB NO. 875-19		DWG. NO. 57-1	
MARK	NO.	MARK	SHAPE	LENGTH	WT.	ITEM NO.	REMARKS	
ED3	1	ED3			—			
	1	a2	L7x4x $\frac{3}{8}$	15'1 $\frac{1}{2}$ "		32		
	1	a3	D0	15'1 $\frac{1}{2}$ "		32		
	1	a4	D0	15'0 $\frac{3}{8}$ "		32		
	1	a5	L7x4x $\frac{3}{8}$	15'0 $\frac{3}{8}$ "		32		
	4	a1	L3x3x $\frac{3}{8}$	0'11"		36	Bolt For Ship.	
	4	pa	R 7x $\frac{3}{8}$	8		35		
	4	ag	L9x4x $\frac{1}{2}$	0'5"		37 ^c	Bolt For Ship. Make From 1/2" if necessary	
	4	pc	B 4x $\frac{3}{8}$	0'10"		34		
	2	pd	R 9x $\frac{1}{4}$	14'10 $\frac{3}{4}$ "		33		
	4	pf	B 2x $\frac{5}{8}$	14'6 $\frac{1}{8}$ "		38		

[illegible]

154-94



154-95